

EMCO SPECIALTY PRODUCTS, INC.  
 408 MIAMI AVE.  
 KANSAS CITY, KS 66105  
 913-281-4555 / FAX. 913-281-4554

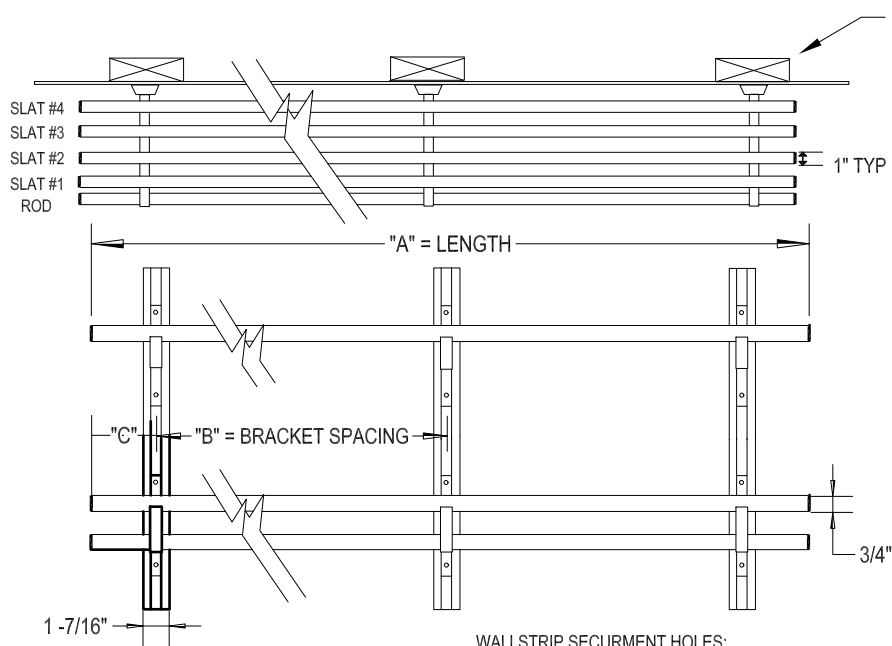
# R2 HANGER SHELF

BRACKET:  
 DIECAST ALUMINUM, POWDER COATED BLACK

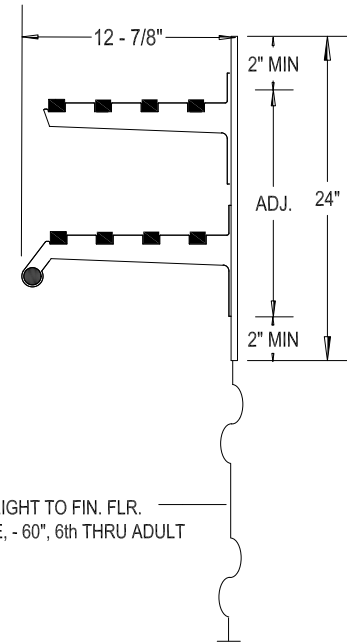
WALLSTRIP:  
 EXTRUDED ALUMINUM, POWDER COATED BLACK  
 WITH PLASTIC END CLOSURES.

HANGER ROD:  
 EXTRUDED ALUMINUM TUBE, POWDER COATED BLACK  
 WITH PLASTIC END CLOSURES.

- SLAT TYPE:
- A. SILVER ANODIZED ALUMINUM WITH PLASTIC END CLOSURES.
  - B. BRONZE ACRYLIC COATED ALUMINUM WITH PLASTIC END CLOSURES.
  - C. AMERICAN WALNUT HARDWOOD
  - D. MEDIUM OAK HARDWOOD
  - E. LIGHT OAK HARDWOOD



BLOCKING BY OTHERS



SUGGESTED HEIGHT TO FIN. FLR.  
 42" THRU 5th GRADE, - 60", 6th THRU ADULT

WALLSTRIP SECURMENT HOLES:  
 DRILL TO FIT A #10 ROUND HEAD SCREW  
 (WALL FASTENERS BY OTHERS)

NOTE: 1. A&B ALUMINUM SLAT THAT EXCEED 12'-0" WILL BE SENT IN SECTIONS  
 2. C.D.&E. WOODEN SLAT SIZES THAT EXCEED 8'-0" WILL BE SENT IN SECTIONS

PLEASE SPECIFY

ITEM	QUAN.	LOCATION	LENGTH "A"	BRACKETS		OVERHANG "C"	SLAT TYPE	ADD'L DRWG #	SPLICE	HANGERS (PLEASE SPECIFY TYPE)	OPEN HOOK	BALL TOP	CLOSED LOOP
				NO.	"B"								
A													
B										NO 10 DK BROWN PLASTIC			NA
C										NO. 11 BLACK PLASTIC			
D										NO. 13 _____			NA
E										NO. 15 HARDWOOD			
F										NO. 17 PLATED WIRE			

RECEPTACLES: \_\_\_\_\_ "A" PLASTIC  
 \_\_\_\_\_ "B" PLASTIC  
 \_\_\_\_\_ "C" METAL

PROJECT: \_\_\_\_\_  
 LOCATION: \_\_\_\_\_  
 DISTRIBUTOR: \_\_\_\_\_  
 DRAWING NO: \_\_\_\_\_ DATE: \_\_\_\_\_  
 SHEET \_\_\_\_\_ OF \_\_\_\_\_ REVISIONS: \_\_\_\_\_