

EMCO SPECIALTY PRODUCTS, INC.
 408 MIAMI AVE.
 KANSAS CITY, KS 66105
 913-281-4555 / FAX. 913-281-4554

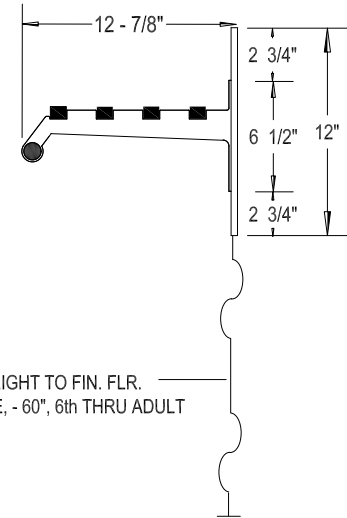
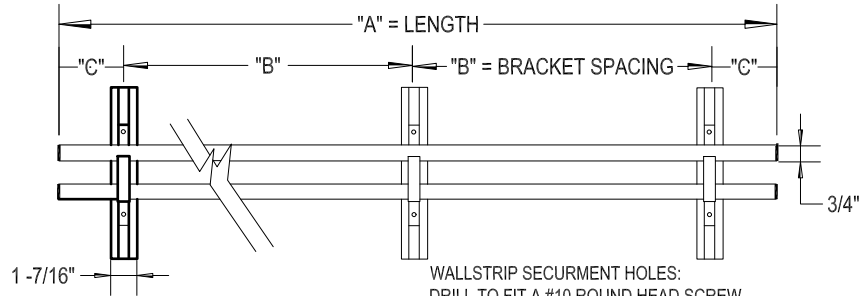
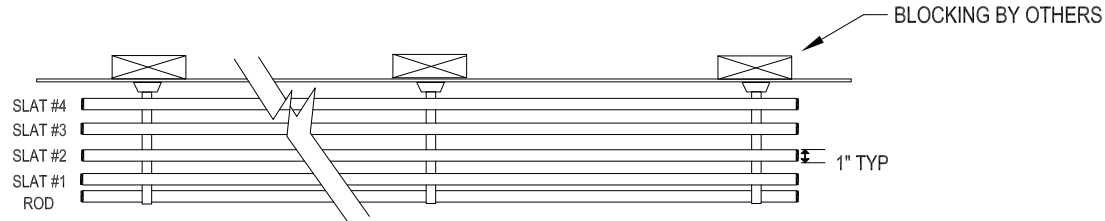
R1 HANGER SHELF

BRACKET:
 DIECAST ALUMINUM, POWDER COATED BLACK

WALLSTRIP:
 EXTRUDED ALUMINUM, POWDER COATED BLACK
 WITH PLASTIC END CLOSURES.

HANGER ROD:
 EXTRUDED ALUMINUM TUBE, POWDER COATED BLACK
 WITH PLASTIC END CLOSURES.

- SLAT TYPE:
- A. SILVER ANODIZED ALUMINUM WITH PLASTIC END CLOSURES.
 - B. BRONZE ACRYLIC COATED ALUMINUM WITH PLASTIC END CLOSURES.
 - C. AMERICAN WALNUT HARDWOOD
 - D. MEDIUM OAK HARDWOOD
 - E. LIGHT OAK HARDWOOD



NOTE: 1. A&B ALUMINUM SLAT THAT EXCEED 12'-0" WILL BE SENT IN SECTIONS
 2. C.D.&E. WOODEN SLAT SIZES THAT EXCEED 8'-0" WILL BE SENT IN SECTIONS

PLEASE SPECIFY

ITEM	QUAN.	LOCATION	LENGTH "A"	BRACKETS		OVERHANG "C"	SLAT TYPE	ADD'L DRWG #	SPLICE	HANGERS (PLEASE SPECIFY TYPE)	OPEN HOOK	BALL TOP	CLOSED LOOP
				NO.	"B"								
A													
B										NO 10 DK BROWN PLASTIC			NA
C										NO. 11 BLACK PLASTIC			
D										NO. 13 _____			NA
E										NO. 15 HARDWOOD			
F										NO. 17 PLATED WIRE			

RECEPTACLES: _____ "A" PLASTIC
 _____ "B" PLASTIC
 _____ "C" METAL

PROJECT: _____
 LOCATION: _____
 DISTRIBUTOR: _____
 DRAWING NO: _____ DATE: _____
 SHEET _____ OF _____ REVISIONS: _____