

EMCO SPECIALTY PRODUCTS, INC.
 408 MIAMI AVE.
 KANSAS CITY, KS 66105
 913-281-4555 / FAX. 913-281-4554

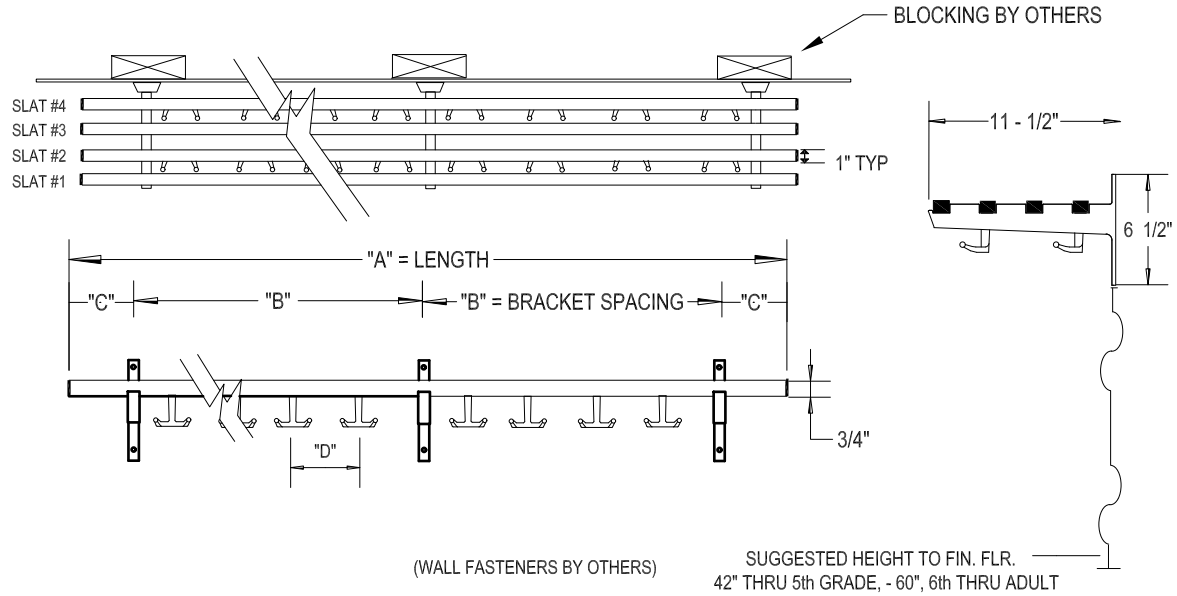
#33 HANGER SHELF

BRACKET:
 DIECAST ALUMINUM, POWDER COATED BLACK

HOOK:
 MOLDED DOUBLE-PRONGED LEXAN POLYCARBONATE.

SLAT TYPE:
 A. SILVER ANODIZED ALUMINUM WITH PLASTIC END CLOSURES.
 B. BRONZE ACRYLIC COATED ALUMINUM WITH PLASTIC END CLOSURES.

- HOOK
 (Specify Color)
- ___ DARK BROWN
 - ___ BLACK
 - ___ GRAY
 - ___ RED
 - ___ ORANGE
 - ___ YELLOW
 - ___ GREEN
 - ___ BLUE
 - ___ PURPLE
 - ___ ASSORTED



NOTE: #30 SERIES RACKS ARE LIMITED TO 8'-0" LENGTH MAXIMUM.

ITEM	QUAN.	LOCATION	LENGTH "A"	BRACKETS		OVERHANG "C"	HOOKS		SLAT TYPE	ADD'L DRWG #	SPLICE
				NO.	"B"		NO.	"D"			
A											
B											
C											
D											
E											
F											

PROJECT: _____
 LOCATION: _____
 DISTRIBUTOR: _____
 DRAWING NO: _____ DATE: _____
 SHEET _____ OF _____ REVISIONS: _____